

Voltage selector switch, 2 stages, serie-parallel, panel mounting



Voltage Selector  
 2 positions  
 Panel Mounting

See below:

[Approvals and Compliances](#)

### Description

- Voltage Selector , 2 positions
- Series-parallel connections
- Solder terminals

### References

Alternative: version for PCB mounting [SWA2 \(Print\)](#)

### Technical Data

|                                 |  |                                 |  |   |
|---------------------------------|--|---------------------------------|--|---|
| Ratings                         | IEC: 6.3 A / 250 VAC; 50 Hz  | Solderability                   | 350 °C / 2 sec acc. to IEC 60068-2-20, Test Ta, method 2   |   |
|                                 | UL: 6.3 A / 250 VAC; 60 Hz   |                                 | Resistance to Soldering Heat                               | 350 °C / 10 sec acc. to IEC 60068-2-20, Test Tb, method 2 |
|                                 | CSA: 6.3 A / 250 VAC; 60 Hz  |                                 |  | Insulation Resistance                                     |
| Mounting                        | Panel mount from front side  | Contact Resistance              | < 10mΩ at 20 mV  |   |
| Attachment                      | Screw-on mounting  | Dielectric Strength             | > 2kVAC between L-N<br>> 4kVAC between L/N-PE (1min; 50Hz) |   |
| Terminal                        | Solder   | Clearance and Creepage Distance | > 3mm<br>> 8mm between L/N-PE                              |   |
| Number of Stages                | 2  | Resistance to Vibration         | acc. to IEC 60068-2-6, test Fc                             |   |
| Lifetime                        | 300 operating cycles (without load)                                | Panel Thickness S               | max 8.5 mm   |   |
| Degree of Protection            | IP40   |                                 |  |   |
| Protection Class                | Suitable for appliances with protection class II acc. to IEC 61140 |                                 |  |   |
| Allowable Operation Temperature | -40 °C to 85 °C  |                                 |  |   |
| Climatic Category               | 25/85/21 acc. to IEC 60068-1                                       |                                 |  |   |
| Material: Socket                | Thermoplastic, black, UL 94V-0                                     |                                 |  |   |
| Weight                          | 3.9 g  |                                 |  |   |

### Approvals and Compliances

Detailed information on product approvals, code requirements, usage instructions and detailed test conditions can be looked up in [Details about Approvals](#)

SCHURTER products are designed for use in industrial environments. They have approvals from independent testing bodies according to national and international standards. Products with specific characteristics and requirements such as required in the automotive sector according to IATF 16949, medical technology according to ISO 13485 or in the aerospace industry can be offered exclusively with customer-specific, individual agreements by SCHURTER.

### Approvals



The approval mark is used by the testing authorities to certify compliance with the safety requirements placed on electronic products.

Approval Reference Type: SWA1

| Approval Logo | Certificates                  | Certification Body | Description                 |
|---------------|-------------------------------|--------------------|-----------------------------|
|               | <a href="#">VDE Approvals</a> | VDE                | Certificate Number: 4004796 |
|               | <a href="#">UL Approvals</a>  | UL                 | UL File Number: E72661      |



## Product standards

Product standards that are referenced

| Organization   | Design                | Standard         | Description                     |
|--|-----------------------|------------------|---------------------------------|
|  | Designed according to | UL 508           | Industrial control equipment    |
|  | Designed according to | CSA C22.2 no. 14 | Fuseholder general requirements |



## Application standards

Application standards where the product can be used

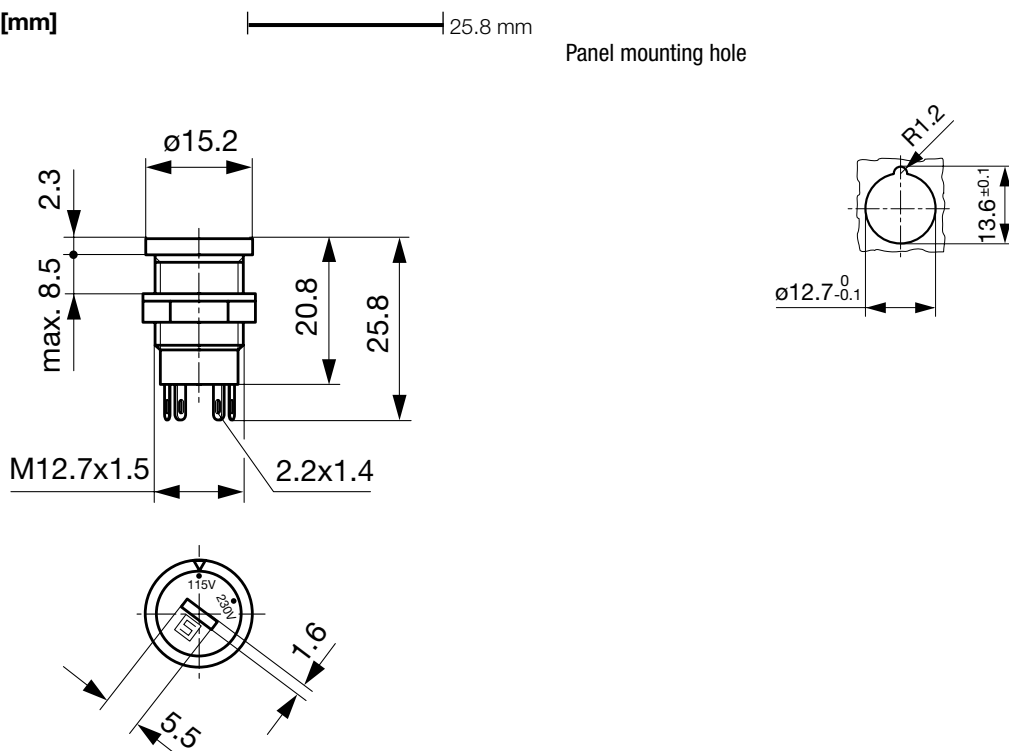
| Organization   | Design                         | Standard     | Description  |
|--|--------------------------------|--------------|--|
|  | Designed for applications acc. | IEC/UL 60950 | IEC 60950-1 includes the basic requirements for the safety of information technology equipment.  |
|  | Designed for applications acc. | IEC 60335-1  | Safety of electrical appliances for household and similar purposes. Meets the requirements for appliances in unattended use. This includes the enhanced requirements of glow wire tests acc. to IEC 60695-2-11 or -12 & -13. |

## Compliances

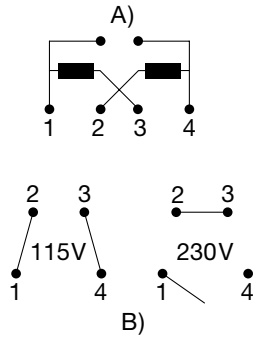
The product complies with following Guide Lines

| Identification   | Details                                      | Initiator   | Description   |
|--|--|-------------|---|
|  | <a href="#">CE declaration of conformity</a> | SCHURTER AG | The CE marking declares that the product complies with the applicable requirements laid down in the harmonisation of Community legislation on its affixing in accordance with EU Regulation 765/2008. |
|  | <a href="#">REACH</a>                        | SCHURTER AG | On 1 June 2007, Regulation (EC) No 1907/2006 on the Registration, Evaluation, Authorization and Restriction of Chemicals 1 (abbreviated as "REACH") entered into force.                               |

## Dimension [mm]



Diagrams



A) Power mains  
 B) Internal contact arrangement for series-parallel connection

All Variants

| Letterings |         | Order Number |
|------------|---------|--------------|
| Stage 1    | Stufe 2 |              |
| 110        | 220     | 0033.4501    |
| 115        | 220     | 0033.4502    |
| 120        | 240     | 0033.4503    |
| 115        | 230     | 0033.4504    |
| 50 Hz      | 60 Hz   | 0033.4508    |
| LO         | HI      | 0033.4513    |
|            |         | 0033.4514    |
| 0          | 1       | 0033.4518    |
| A          | B       | 0033.4521    |
| Test       | RUN     | 0033.4524    |

Most Popular.

Availability for all products can be searched real-time: <https://www.schurter.com/en/Stock-Check/Stock-Check-SCHURTER>

Packaging Unit 100 Pcs